



GAT MONTHLY MEMBERSHIP PROGRESS REPORT

Results as of: 10/31/2022

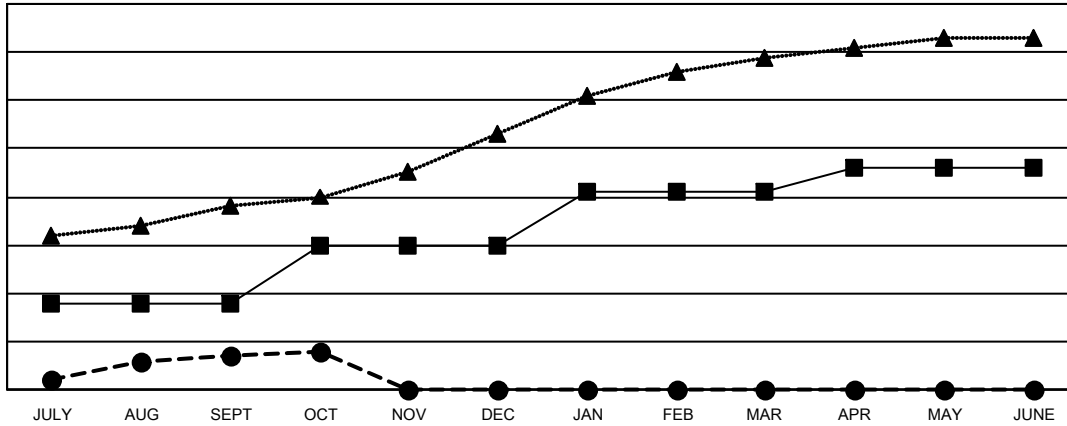
Multiple District 3232

LOCATION: INDIA

Clubs			
RESULTS FOR 2022-2023			
QUARTER	NEW CLUB GOAL	NEW CLUBS	DROPPED CLUBS
JULY/AUG/SEPT	18	7	102
OCT/NOV/DEC	12	1	0
JAN/FEB/MAR	11	0	0
APR/MAY/JUNE	5	0	0

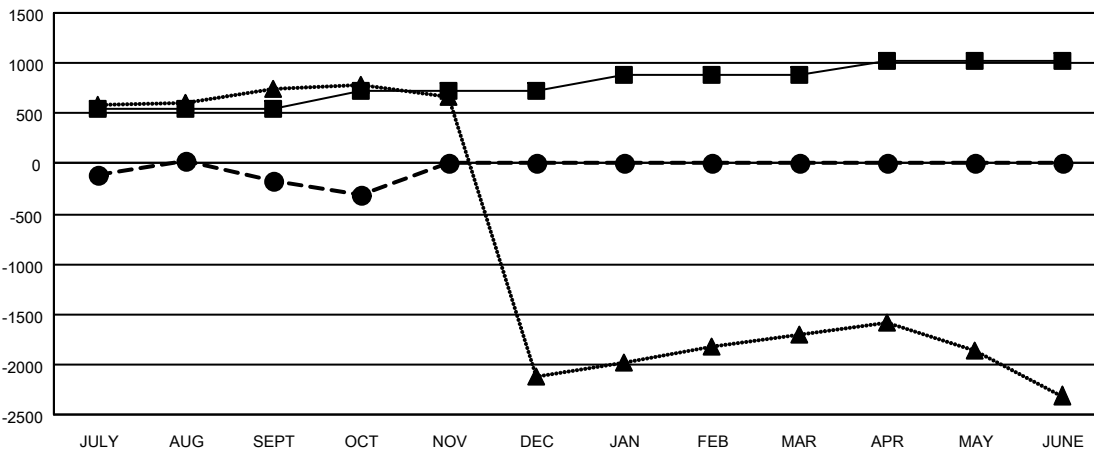
Members			
RESULTS FOR 2022-2023			
QUARTER	MEMBER GROWTH NET GOAL	MEMBER GROWTH ACTUAL	DROPPED MEMBERS ACTUAL (including transfers)
JULY/AUG/SEPT	545	558	658
OCT/NOV/DEC	175	70	208
JAN/FEB/MAR	170	0	0
APR/MAY/JUNE	125	0	0

GOALS AND ACTUAL NEW CLUBS CUMULATIVE



- CURRENT YEAR GOALS FOR NEW CLUBS
- CURRENT YEAR ACTUAL NEW CLUBS
- ▲- LAST YEAR ACTUAL NEW CLUBS

GOALS AND ACTUAL MEMBERS CUMULATIVE



- MEMBER GROWTH NET GOAL
- MEMBER GROWTH ACTUAL
- ▲- LAST YEAR MEMBERSHIP ACTUAL

DROPPED CLUBS: 102	104 CLUBS OF 608 ADDED 1 OR MORE NEW MEMBERS	GENDER DISTRIBUTION
DROPPED MEMBERS	CLICK HERE FOR CUMULATIVE MEMBERSHIP DATA	MALE 10,976 (63.13%)
DECEASED 13		FEMALE 6,406 (36.85%)
CLUB CANCELLED 26		NON BINARY 0 (0.00%)
OTHER 827		PREFER NOT TO ANSWER 4 (0.02%)
TOTAL 866		TOTAL FAMILY UNIT MEMBERS 13,130
		FAMILY MEMBERS PAYING HALF DUES 9,109